



## let the **light** shine in

SITTING PROUDLY ON MARINE PARADE, THIS STUNNING **BRENDON GORDON** DESIGNED HOME HAS REPLACED THE ORIGINAL FAMILY BACH - A TWO-AND-A-BIT BEDROOM STUCCO HOUSE CIRCA LATE 40'S.. *Story ANDY MARTIN. Photography MICHAEL POLE.*



Architect - Brendon Gordon

AFTER ENJOYING MANY SUMMER HOLIDAYS at the property since 1971, owners Phil and Judy Lawson decided it was time to build their dream home. The site, which could take up to four stand alone dwellings, was split and an area of some 460sqm chosen as the prime spot. The adjacent front site was sold, leaving two rear sites with endless options for the future.

The architect's brief was to maximise light and the beautiful view whilst maintaining privacy. Square lines were a requirement, and Phil was keen to ensure there was a place to park the boat and fillet the fish! Future proofing against neighbouring buildings was also a priority.

The best way to describe this home is a clean, minimalistic design that would make any apartment dweller green with envy. The entrance is dramatic raw pre-cast concrete slab stairs to the upper level. The glass balustrade provides a floating feeling, and the concrete stairs were a great way to add impact, as well as get the sand off your feet when coming in from the beach!

#### STARTING UP

As soon as you enter this contemporary residence, you can't help but be taken by the amazing view. Even the trees across the road, which are in front of the house, are a feature complementing sweeping views down to the south as well as straight out to sea.

One of the first things to catch my eye was the kitchen, which is north facing, does not have any exterior windows. Although the main reason for this was the new home being constructed next door, standing at the kitchen island you could see that this was also a clever design feature – your attention is drawn to the dramatic view looking back out the front of the house.

Open plan was the order for the kitchen, dining room and lounge, with many large floor to ceiling length windows and sliding doors providing ample opportunity to allow natural light to fill this area.

Stepping out onto the front deck on the upper level to check out the view and meet Murphy the Boxer, you could appreciate how privacy issues have been dealt with. The exterior support pillars have been cleverly stepped so when you move forward you don't feel that you are on show to the public and approaching vehicles. This same concept has been mirrored for the patio area on the lower level.

There are three outside entertaining decks providing ample choice depending on where the sun is shining and the sea breeze is blowing. Apart from the front deck, my favourite outside space is the balcony area off the back of the kitchen. It is also Phil and Judy's preferred choice for evening meals and entertaining as it picks up the late afternoon sun. LouvreTec aluminium louvres have been used to great effect to provide shade and privacy. A large sliding louvre panel with opening horizontal louvers can manually slide along to close off the northernmost face of this area and the view into the neighbours bedroom. Nice touch.

The master bedroom with ensuite, guest bedroom, and a separate bathroom complete the upper level of this 330 square metre home. The client's brief has been absolutely nailed on this, the main living level. It feels spacious, private, and the natural light beams in from all areas. The clean and seamless finishing including no sills, architraves, plus negative detailing, is a masterstroke.

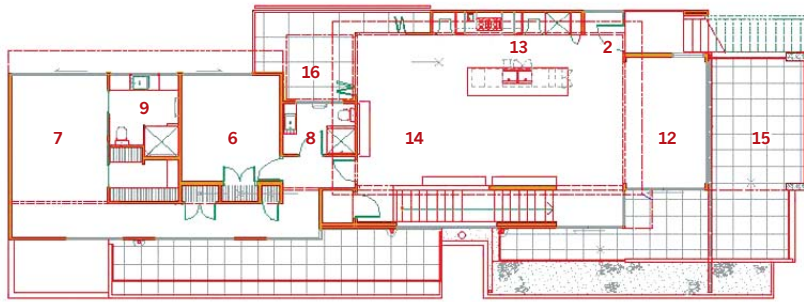
#### BORROWING LIGHT

You could see architect Brendon Gordon of Brendon Gordon Architecture was pretty proud of this project as we worked our way down to the lower level. Once we entered this level through the oversized solid front door with an impressive lacquered finish. As soon as you walk into the house, you are led to the light-well which leads you towards the stairs to the upper level - that is if you don't take the lift. Stairs can be a make or break part of any two-level home design, and again pre-cast concrete slabs, along with a decent width, have been used to great effect. They are a feature of an uncluttered and functional interior design.

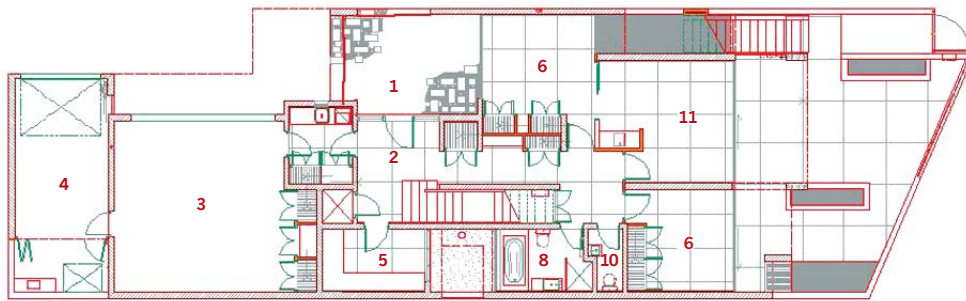
The theme of utilising natural light continues in as many downstairs areas as possible. Even though the stud height is your standard 2.4metre, it feels higher with the use of full height doors, and no architraves, sills and negative detailing.

THE BEST WAY TO DESCRIBE THIS HOME IS A CLEAN, MINIMALISTIC DESIGN THAT WOULD MAKE ANY APARTMENT DWELLER GREEN WITH ENVY.





^UPPER FLOOR PLAN



^GROUND FLOOR PLAN

LEGEND

- 1. Entry Court
- 2. Entry
- 3. Garage
- 4. Carport
- 5. Office
- 6. Bedroom
- 7. Master Bedroom
- 8. Bathroom
- 9. Ensuite
- 10. WC
- 11. Family
- 12. Lounge
- 13. Kitchen
- 14. Dining
- 15. Deck
- 16. Balcony

Located downstairs are two bedrooms, an office, bathroom and a self-contained lounge which sprawls out onto the outside patio area with an outside shower - a must for homes by the beach. Like the upper level, the staggering of the pillars means you have maximum privacy.

Our tour ended with a quick walk through the double garage with a huge array of storage cupboards and hidden workbench, through to the single garage for the boat. Good design and space utilisation continued, with the back wall of this garage opening courtesy of sliding doors. This allows for the boat to be backed in at the end of a day's fishing and cleaned - the custom-made filleting table makes light work of getting the day's catch filleted.

THE BUILD PROCESS

"The site is sumptuous, so I guess I was ahead from the start" said Brendan. "The whole building process took a year, and I must say Murray Pedersen did a fantastic job. We kept the whole design crystal clean and seamless because of the extreme coastal environment - there are no junctions and everything is hidden away, but the simplicity belies what goes into hiding it all away! This sort of design is a real test for the builder. It's very demanding too when there are no sills, no architraves, nowhere to run to, nowhere to hide. Everything has to line up, all square, no handles on the doors, a little light-well coming in at the top of the stairs - really testing", he said.

"The main construction is solid concrete block with a uni-span floor. It is a very clean design with pre-cast concrete slabs in the front and the columns finished finely without bulkiness. There's a combination of plaster and other design elements such as aluminium closed panels to maintain the clean fine look. A darker grey has also been used in some of the recessed areas to exaggerate the recess and add drama with the slight two-tone effect. Even though it is still a pretty minimalist design, we still have eaves in the right places", he said.

Interior design was handled largely by Judy and a designer friend in collaboration with Brendon and his team. Neutral colours were chosen so that Judy and Phil's pieces of artwork could be displayed to maximum advantage.

SIGNING OFF

There is a whole range of features about this home, other than the fact that it is a dress circle location and a gentle stroll of seven to eight minutes to the foot of the Mount. Glass is used to advantage throughout, with lots of lateral light, no curtains yet very private with a careful use of louvres, and there are big windows to accentuate the stunning views. The whole concept is clean and pleasing, designed to meld into the environment and provide the best living on a wonderful site. And like all successful projects the designer and clients are thrilled with the end result.



Sliding LouvreTec panel



Square detail (Supreme Lock and Hardware)



Negative detailing



Custom-made light in kitchen